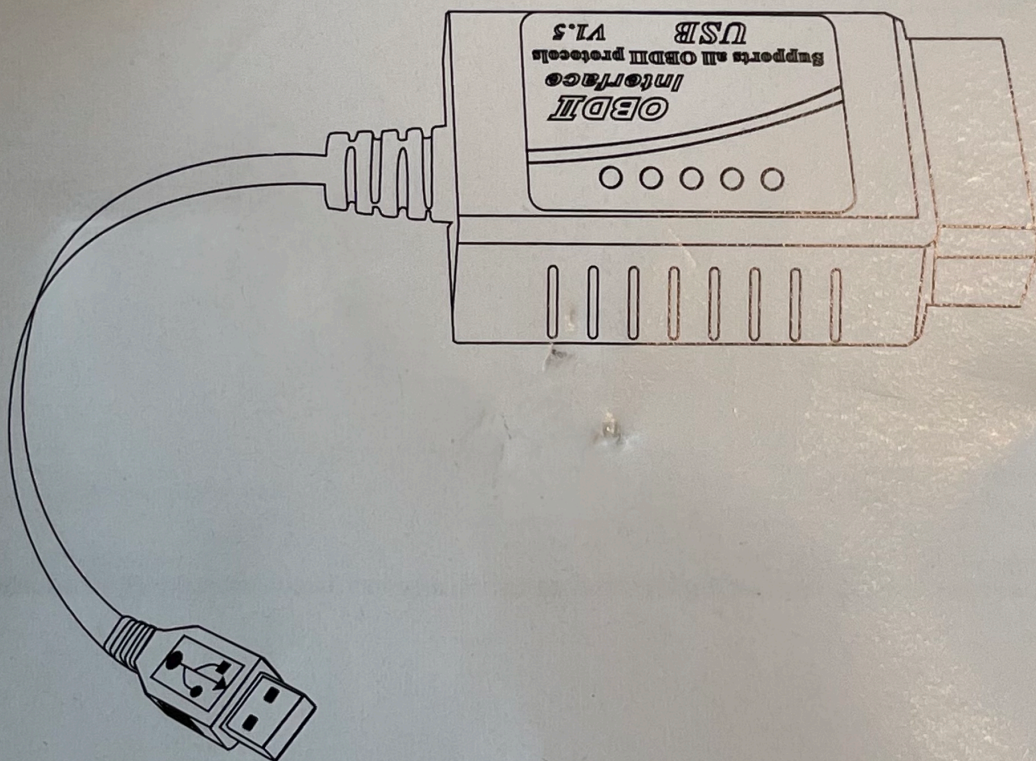


# USB OBDII

## Car Diagnostic Scanner

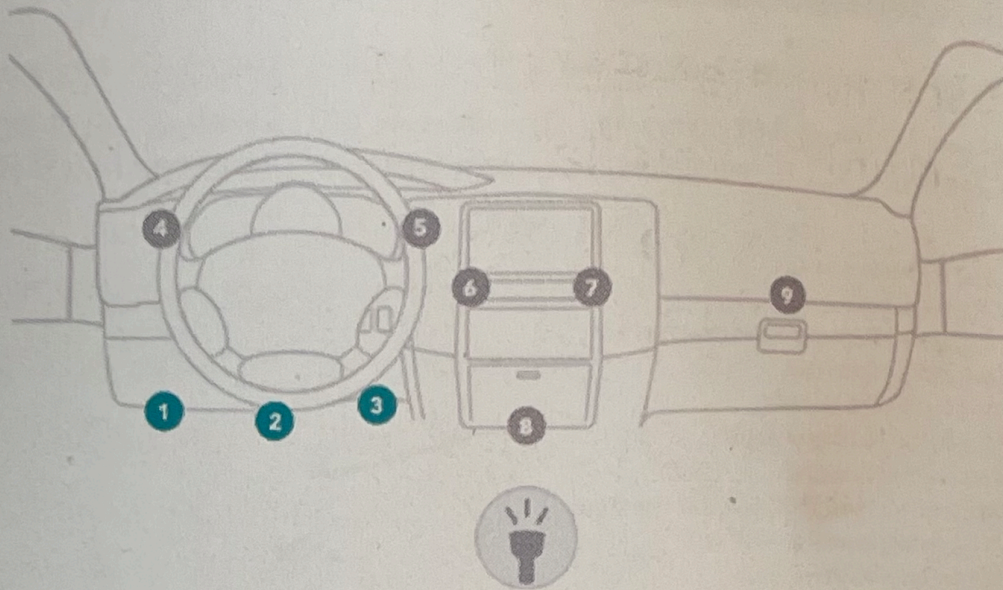


### User Guide




## USB OBDII Connection Windows

1. Plug OBDII connector into car OBDII port



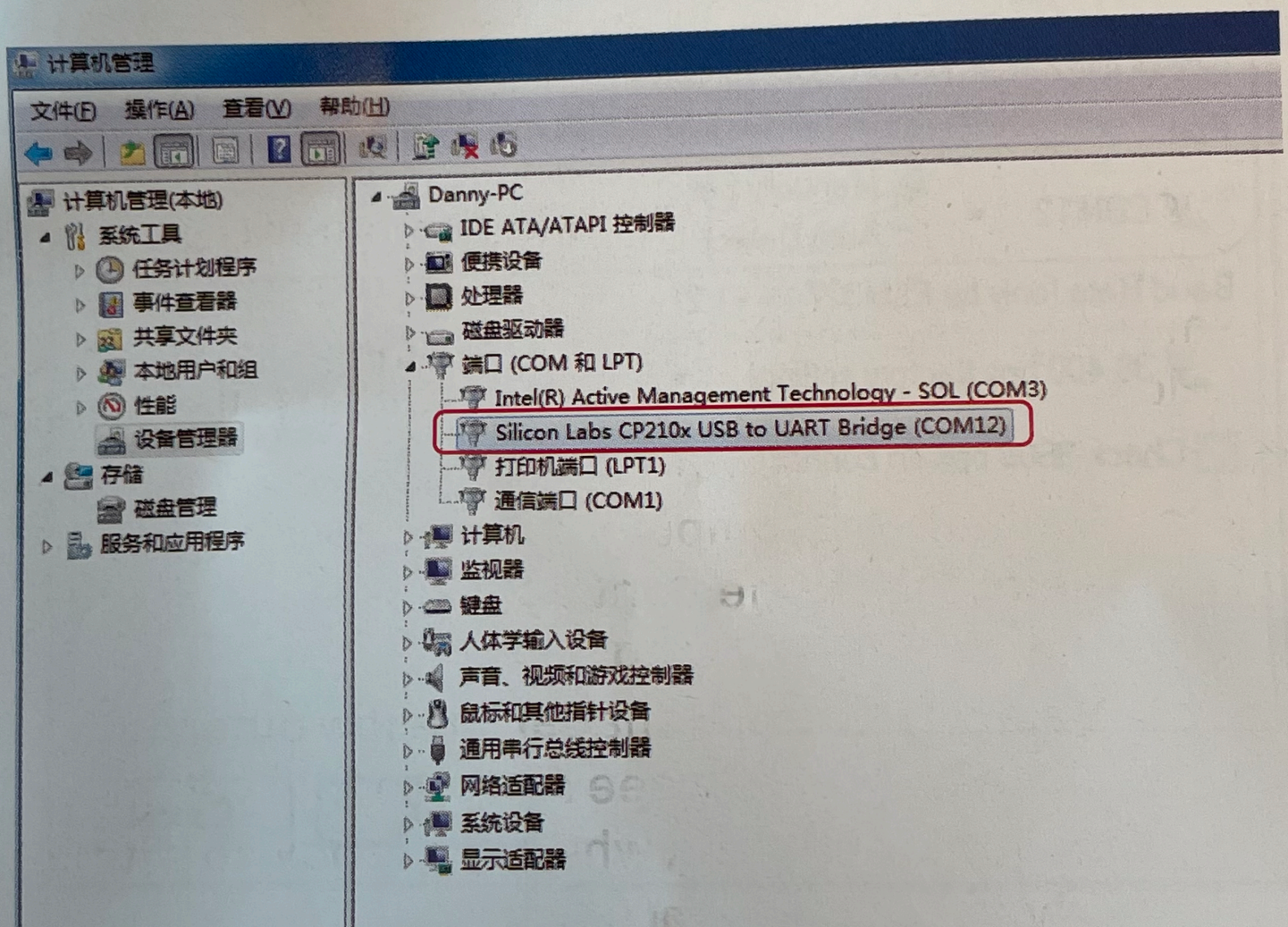
2. Plug wired USB connector into computer USB port. If operation system is Windows7 or Win8, driver will be downloaded and installed automatically. If automatic download or installation failed, please follow below steps and install the driver manually:

- a) Right click Computer icon on your desk and select "Management" to open the computer management dialog box
- b) Select "Device Manager". Below other devices, you can see a device with yellow exclamation mark which is the device without driver  USB-Serial Controller
- c) Login at [www.elm327.com](http://www.elm327.com) Click "Support"- "PL2303 USB OBDII Driver" to download and finish installation. After that, the yellow




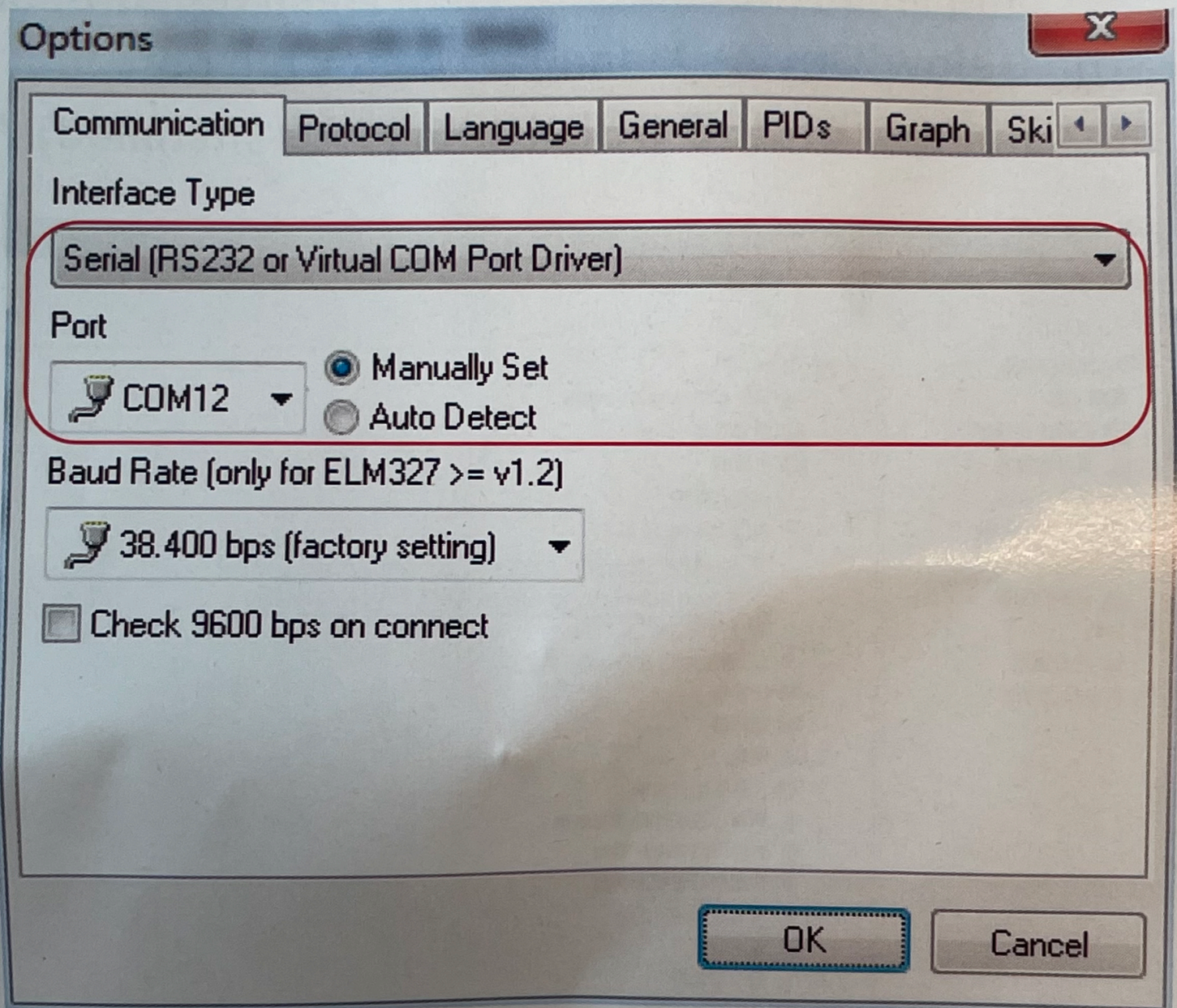
exclamation mark below device manager would disappear.

- d) Login at [www.elm327.com](http://www.elm327.com) Click "**Support**" - "ScanMaster-ELM for Windows" to download and finish installation. Then finish registration.
- e) Below "Device Manager", check the port number of USB OBDII(with driver installed) ."



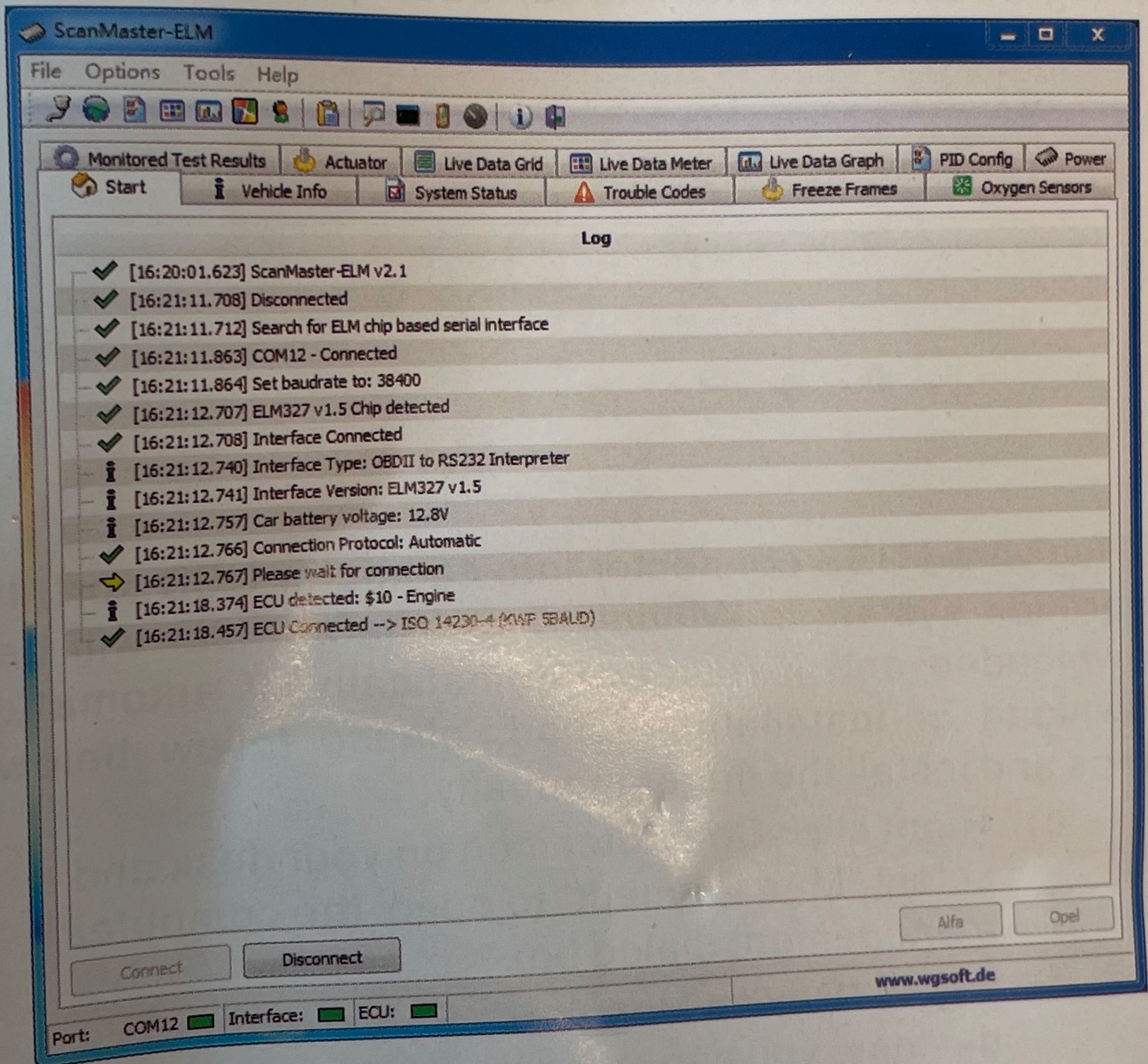


3. Run ScanMaster-ELM below Options-Communication, choose Serial (RS232 or Virtual COM Port Driver) for icon , set serial port number manually with the number which is the same in last step.





4. Click "Connect" to start the connection with car ECU





## 5. Trouble Codes

